

- > **Port size:**
3/4" ISO G/NPT
1" NPT, DN 20, DN 25
flanged
- > **Option for**
Non-Relieving or
Relieving



Technical features

The RS5 series spring loaded pressure regulator with diaphragm assembly offer good accuracy and repeatability and safe shut-off at zero flow due to soft seated valve.

Applications:

- Gas mixing
- Gas distribution
- Chemical Processing
- Manufacturing processes
- Purging & charging systems
- Air compressors

Medium:

For gaseous and liquid fluids

Maximum inlet pressure:

Max. 100 bar (1450 psi)

Leakage:

Bubble tight (standard, typically 10^{-3} atm.cm³/sec⁻¹)
 Helium leak tested to 10^{-6} atm.cm³/sec⁻¹ (on request)

Weight:

4,5 kg

Ambient/

Media temperature:

NBR:

-10 ... +100°C (+14 ... +202°F)

FPM:

-20 ... +150°C (-4 ... +302°F)

EPDM:

-30 ... +115°C (-22 ... +239°F)

Remark:

The values in brackets for outlet pressure underneath stands for the optimal pressure range. Adjustment below that value are not possible or may be very inaccurate.

Material:

Body: Stainless steel

Valve pad: PCTFE

Diaphragm: NBR

O-ring: NBR

Options:

- Differential pressure version
- Differential pressure version with external sensing
- Gauge ports

Option selector

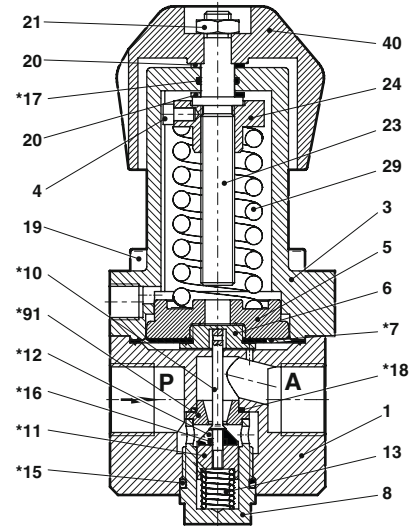
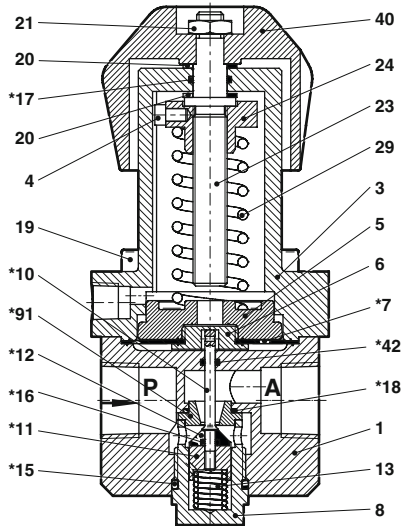
RS5-★★★★★★★

Valve Seat Size	Substitute	Options	Substitute
7 mm	C	Differential Pressure	D
9,5 mm	E	Remote Sensing	R
12,7 mm	G	Gauge ports	M
Materials	Substitute	Seals	Substitute
Stainless steel	A9	NBR (-10 ... +80°C)	N
Port size	Substitute	FPM (-20 ... +100°C)	V
G3/4" BSP female	E3	EPDM (-40 ... +130°C)	E
3/4" NPT female thread	A3	Relief Valve	Substitute
1" NPT female thread	A6	with integrated relief valve	R
Screwed-in Flanges DN 20, PN40; L=230 mm	F1	without relief valve	N
Screwed-in Flanges DN 20, PN100; L=230 mm	F2	Outlet Pressure Ranges	Substitute
Screwed-in Flanges DN 25, PN40; L=230 mm	F3	0 (0,2) ... 1 bar	F
Screwed-in Flanges DN 25, PN100; L=230 mm	F4	0 (0,5) ... 5 bar	M
Screwed-in Flanges to special specification; L=230 mm	FX	0 (1) ... 10 bar	P
		0 (5) ... 20 bar	R
		0 (5) ... 40 bar	V

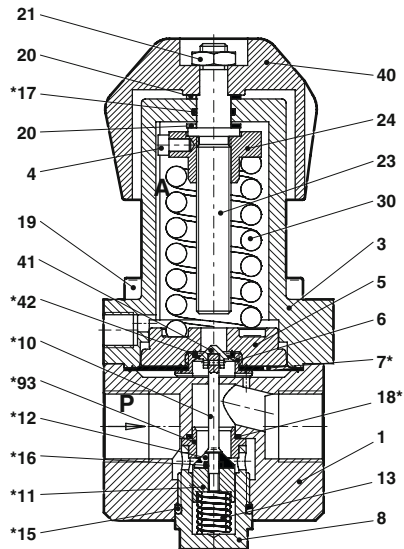
Section View

NPT 3/4

G3/4



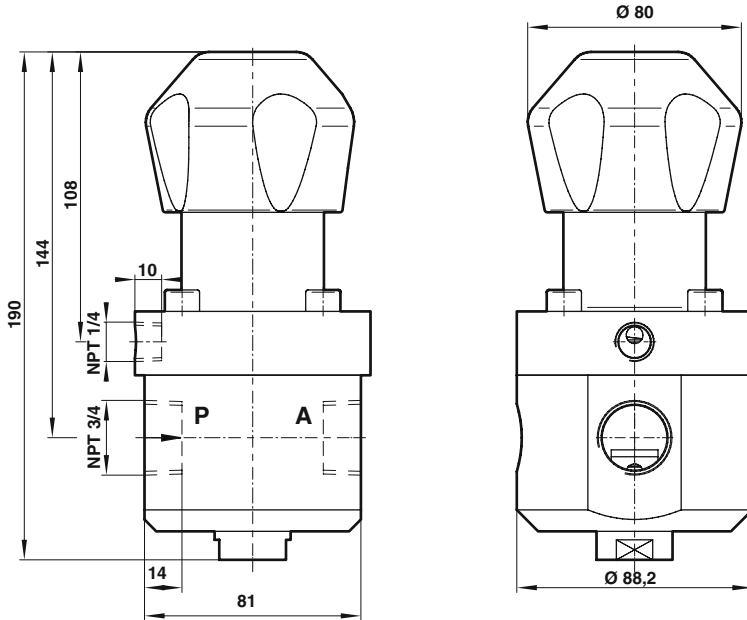
Nr.	Description
1	Body
3	Spring housing
4	Roller
5	Diaphragm plate
6	Clamp ring
*7	Diaphragm
8	Nut
*10	Push rod
*11	Valve case
*12	Soft-sealing insert
13	Pressure spring
*15	O-ring
*16	O-ring
*17	O-ring
18	O-ring
19	Socket head cap screw
20	Washer
21	Nut
23	Spindle
24	Nut
29	Pressure spring
40	Handwheel
*91	Valve seat

Section View
G3/4
with integrated overflow valve


Nr.	Description
1	Body
3	Spring housing
4	Roller
5	Diaphragm plate
6	Clamp ring
*7	Diaphragm
8	Nut
*10	Push rod
*11	Valve case
*12	Soft-sealing insert
13	Pressure spring
*15	O-ring
*16	O-ring
*17	O-ring
*18	O-ring
19	Socket head cap screw
20	Washer
21	Nut
23	Spindle
24	Nut
30	Pressure spring
40	Handwheel
41	Cone
*42	Seal
93	Valve seat

Drawings
NPT 3/4

Dimensions in mm
Projection/First angle



G3/4

