





## Ordering

The units are designated by their type number. The composition of this number can be drawn from the type code. The standard versions are listed in the type survey. When ordering any of the standard versions, please state type number as well as catalog number to preclude possible misinterpretations.

When inquiring about or ordering units not listed in our type survey of this publication, the type number made up by you by means of the type code, however, will do. The corresponding catalog number will then be stated in our confirmation of order. Units with flanged connection are delivered complete with mounting bolts and O-rings. The subplate must be ordered separately.

## Example of order

2-way pressure reducing valve size 10 for flanged mounting with manual setting. Setting pressure max. 315 bar, with mating subplate.

### 3-way pressure reducing valve:

Type No.: D Y K 10 H A 90 001 2 O O  
Cat. No.: **6014254**

### Subplate:

Type No.: P DY 10 A 4 005 1 O O  
Cat. No.: **2840085**

## Type survey (standard versions)

Size	Q [l/min]	p <sub>v</sub> max. [bar]	Actuation	Line connection	Type	Cat No.
10	70	100 315	Manual	Subplate G 1/2 P DY 10 A 4 005 1 O O (Port X closed) <b>2840085</b>	1) D Y K 10 H A 70 001 2 O O 1) D Y K 10 H A 90 001 2 O O	<b>6014253</b> <b>6014254</b>

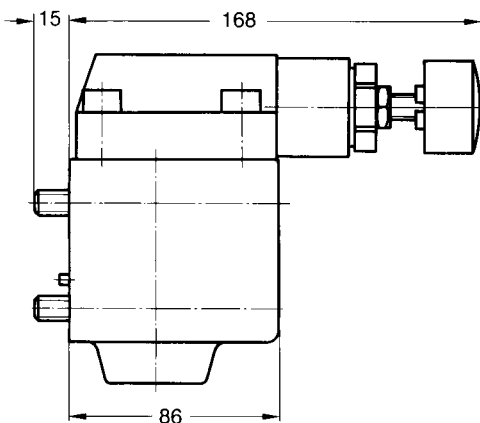
1) Note: Unit is furnished with internal control oil return via port Y (standard version).

For units with external control oil return via port X, not instructions on spare parts drawings.

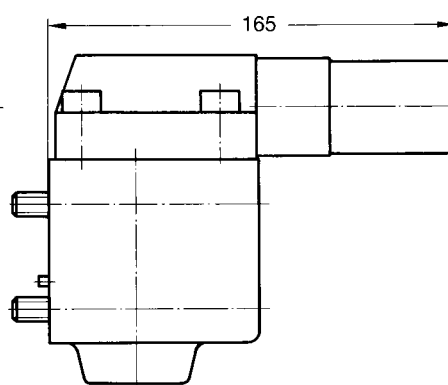
## Dimensional drawings (in mm)

### Pressure reducing valves

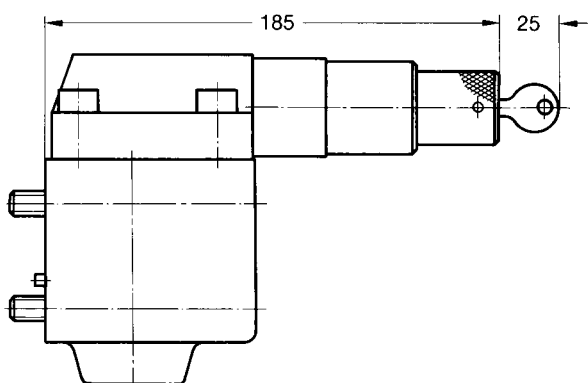
#### D Y K..H...



#### D Y K..HK...

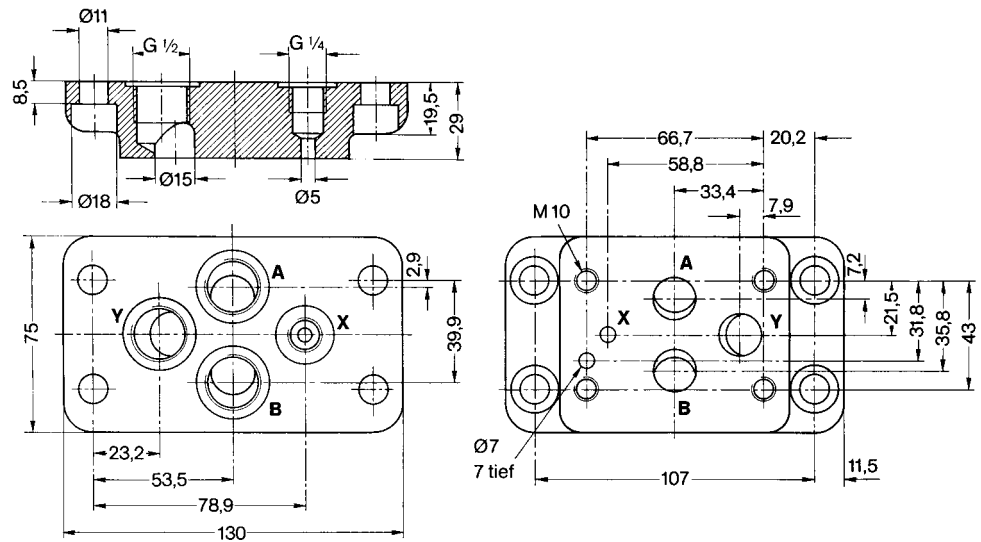


#### D Y K..HV...



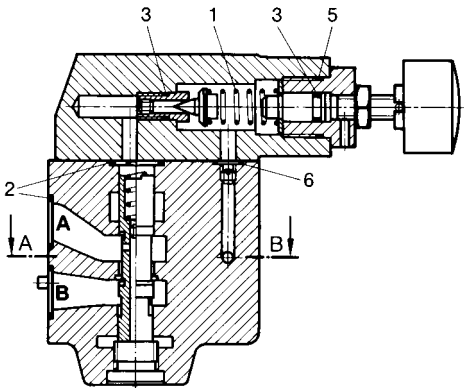
## Dimensional drawings (in mm)

Subplate  
P DY 10 A 4 005 1 O O

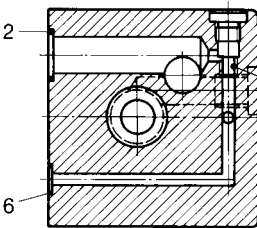


## Spare parts drawings

D Y K..H...

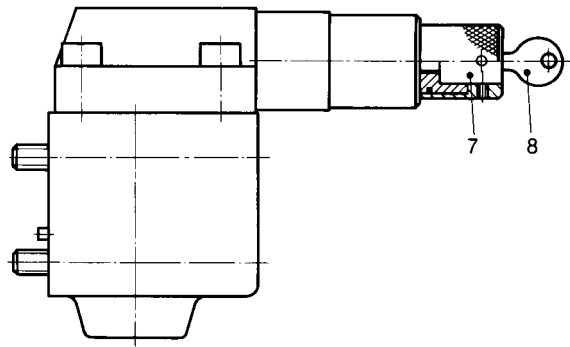


Section A - B



Closed by means of screw 0700514  
if control oil is returned externally via X.

D Y K..HV...



## Spare parts

Part	Qty.	Designation	Cat. No.
1	1	Spring pressure stage 70 pressure stage 90	<b>0701810</b> <b>0701853</b>
2	5	O-ring (17.1 x 2.6)	<b>0701290</b>
3	2	O-ring (7.7 x 1.8)	<b>0701621</b>
5	1	O-ring (20.3 x 1.8)	<b>0701259</b>
6	2	O-ring (9.2 x 1.8)	<b>0701252</b>
7	1	Lock cylinder with key	<b>0568519</b>
8	1	Key	<b>0660051</b>

Mounting bolts, tightening torque = 69 Nm

-	4	Cylinder bolt (M10 x 90 DIN 912-10.9)	<b>0700462</b>
---	---	--	----------------

## Spare parts kits

Cat. No. **0727312**

1 Set of spare parts consists of parts 2 to 6.