

Parameters to VDI 3276

Type designation	D B C 6..S4..	D B C 6..C4..	D B C 6..E..	D B C 6..G..
------------------	---------------	---------------	--------------	--------------

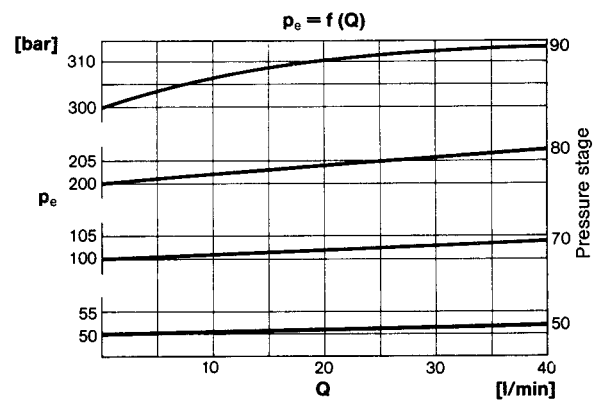
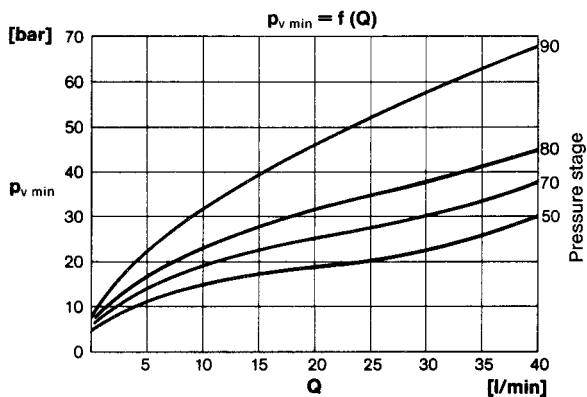
General parameters

Designation	Pressure relief valve			
Symbol				
Design	Seat valve, direct-controlled			
Type of mounting	Flange	Switch board installation	Plug-in design	Flange
Line connection	Thread			Subplate
Mounting position	Optional			
Flow direction	From P to T			
Actuation	By hand			
Weight [kg]	2.4	3.0	0.7	2
Weight of subplate [kg]	-			0.7
Ambient temperature range ϑ_u [°C]	-20 to +50			
Size NG	6			

Hydraulic parameters

Operating pressure range p_e max. [bar]	up to 350		
Adjustable pressure range p_v [bar]	p_v min.: see characteristic curve p_v max.: Pressure stage: 50: 50 Pressure stage: 70: 100 Pressure stage: 80: 210 Pressure stage: 90: 315 Pressure stage: 91: 350		
Pressure fluid temperature ϑ_m max. [°C]	+70		
Viscosity range ν [mm ² /s]	12 to 500		
Flow Q [l/min]	See characteristic curve		

Characteristic curves



p_v min. = smallest adjustable pressure under which valve remains closed by pressure spring $Q = 0$ (l/min).

Ordering

The units are designated by their type number. The composition of this number can be drawn from the type code. The standard versions are listed in the type survey. When ordering any of the standard versions, please state type number as well as catalog number to preclude possible misinterpretations.

When inquiring about or ordering units not listed in our type survey of this publication, the type number made up by you by means of the type code, however, will do. The corresponding catalog number will then be stated in our confirmation of order. Units with flanged connection are delivered complete with mounting bolts and O-rings. The subplate must be ordered separately.

Example of order

Wanted: Pressure relief valve size 6 with threaded port for switch board installation, with manual setting, setting pressure max. 315 bar

Pressure relief valve:

Type No.: D B C 6 H C4 90 001 1 O O

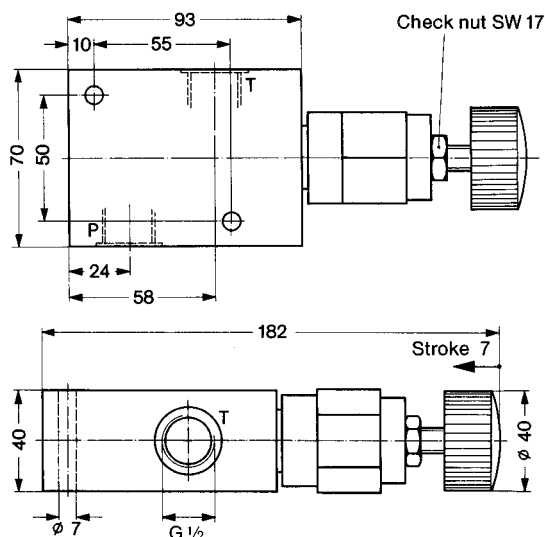
Cat. No.: **6014167**

Type survey (standard versions)

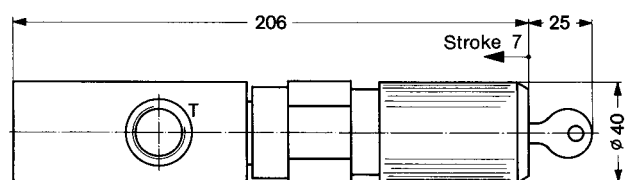
Size	Q [l/min]	p _v max. [bar]	Actuation	Line connection	Type	Cat. No.
6	See characteristic curve	25 50 100 210 315 350	Manual setting	Threaded connection Flange mounting	D B C 6 H S4 25 001 1 O O	6014578
					D B C 6 H S4 50 001 1 O O	6014198
					D B C 6 H S4 70 001 1 O O	6014199
					D B C 6 H S4 80 001 1 O O	6014201
					D B C 6 H S4 90 001 1 O O	6014166
					D B C 6 H S4 91 001 1 O O	6014407
		50 100 210 315 350		Threaded connection Switch board installation	D B C 6 H C4 50 001 1 O O	6014202
					D B C 6 H C4 70 001 1 O O	6014203
					D B C 6 H C4 80 001 1 O O	6014204
					D B C 6 H C4 90 001 1 O O	6014167
					D B C 6 H C4 91 001 1 O O	auf Anfrage
					50 100 210 315 350	Plug-in connection
		D B C 6 H E 70 001 1 O O	6014193			
		D B C 6 H E 80 001 1 O O	6014194			
		D B C 6 H E 90 001 1 O O	6014164			
		D B C 6 H E 91 001 1 O O	6014473			
		50 100 210 315 350	Subplate G 1/4 P S 6 G 2 001 2 O O 1065173 Subplate G 3/8 P S 6 G 3 001 2 O O 1065183	D B C 6 H G 50 001 1 O O		
				D B C 6 H G 70 001 1 O O	6014444	
				D B C 6 H G 80 001 1 O O	6014445	
				D B C 6 H G 90 001 1 O O	6014439	
				D B C 6 H C4 91 001 1 O O	6015310	

Dimensional drawings

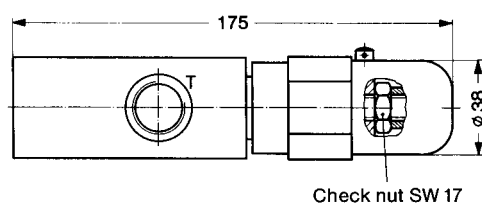
D B C 6 H S4...



D B C 6 HV S4...

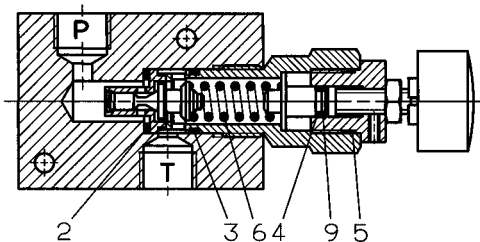


D B C 6 HK S4...

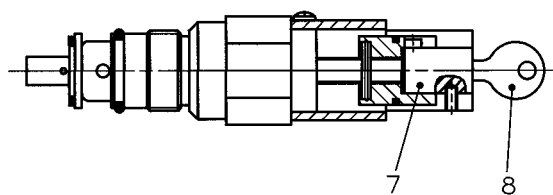


Spare parts drawings

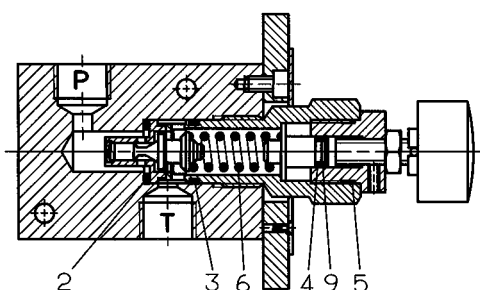
DBC 6 H S4...



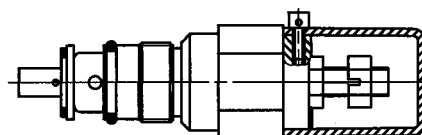
DBC 6 HV...



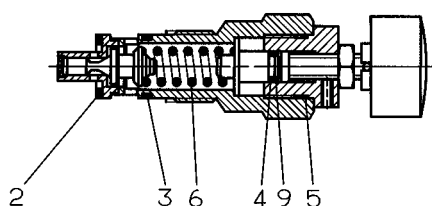
DBC 6 H C4...



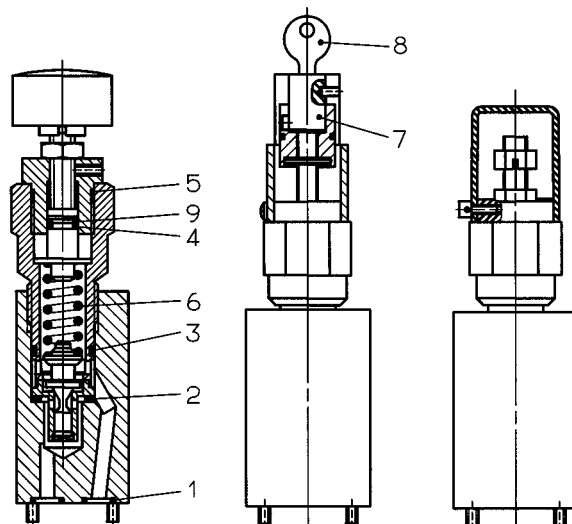
DBC 6 HK...



DBC 6 H E...



DBC 6 H G... DBC 6 HV G... DBC 6 HK G...



Spare parts (Quantities)

Part	Designation	DBC 6 H S4...	DBC 6 HV S4...	DBC 6 H G...	DBC 6 HV G...	Cat. No.
		DBC 6 H C4...	DBC 6 HV C4...	DBC 6 HK G...		
		DBC 6 H E...	DBC 6 HV E...			
		DBC 6 HK S4...				
		DBC 6 HK E...				
1	O-ring (9.2 x 1.8)	-	-	2	2	0701252
2	Usit-ring (17.4 x 24 x 1.5)	1	1	1	1	0657121
3	O-ring (20.3 x 2.6)	1	1	1	1	0701514
4	O-ring (7.6 x 1.8)	1	1	1	1	0701484
5	O-ring (20.3 x 1.8)	1	1	1	1	0701259
6	Spring - pressure stage 50:	1	1	1	1	0720114
	- pressure stage 70:	1	1	1	1	0720115
	- pressure stage 80:	1	1	1	1	0720116
	- pressure stage 90:	1	1	1	1	0569442
	- pressure stage 91:	1	1	1	1	0720880
7	Lock cylinder with key	-	1	-	1	0568519
8	Key	-	1	-	1	0660051
Mounting bolts						
-	4 Cylinder bolts (M 5 x 80 DIN 912-10.9)	-	-	4	4	0700397

1 Set of spare parts consists of parts 1 to 5.