

# Accessories for hydraulic cylinders, types LZO, LZO E, LZO K



**Systemtechnik  
GmbH**

Piston Ø25 - Ø100 mm

7501132.05.08.05

## Specifications

Piston Ø [mm]	Accessory name	Material	Dimension drawing	Mass/Assembly kit [kg]	Order no.:
25	Nut for piston rod DIN 439	Galvanised steel	01	0.003	<b>07 002 23</b>
32				0.007	<b>11 062 66</b>
40				0.010	<b>11 062 67</b>
50,63				0.021	<b>11 062 68</b>
80				0.040	<b>11 062 69</b>
100				0.070	<b>11 079 65</b>
25	Forked head (internal thread) <b>Assembly IG-B</b>	Galvanised steel	02	0.06	<b>40 126 32</b>
32				0.10	<b>43 152 07</b>
40				0.16	<b>43 152 08</b>
50, 63				0.35	<b>43 152 09</b>
80				0.71	<b>43 152 10</b>
100				1.36	<b>43 152 11</b>
25	Spherical swivel-head (internal thread) <b>Assembly IK</b>	Casing: Galvanised steel  Spherical bearing: Steel, inner ring hardened and polished, fitted in outer ring, no-maintenance	03	0.05	<b>43 154 06</b>
32				0.08	<b>43 154 07</b>
40				0.12	<b>43 154 08</b>
50, 63				0.22	<b>43 154 09</b>
80				0.39	<b>43 154 10</b>
100				0.66	<b>43 154 11</b>
25, 32	Bolts <b>Assembly BSS</b>	Bolts: Stainless steel, 1.4021  Lock: Galvanised steel	04	0.03	<b>11 082 68</b>
40				0.04	<b>11 082 69</b>
50				0.05	<b>11 082 70</b>
63, 80				0.09	<b>11 082 71</b>
100				0.14	<b>11 082 72</b>
25, 32	Bearing block with rigid axle <b>Assembly SSB-B</b>	Bearing block: GGG-40, painted bolts: Stainless steel, 1.4021 Lock: Galvanised steel  (other materials on request)	05	0.22	<b>43 351 06</b>
40				0.29	<b>43 351 07</b>
50				0.43	<b>43 351 08</b>
63				0.78	<b>43 351 09</b>
80				0.81	<b>43 351 10</b>
100	Bearing block with bolts, assembly BSS, packaged			1.34	<b>43 351 11</b>

Cylinder switch, type LMS 6 (fits hydraulic cylinder type LZO E), see document 750 1117.

HERION Systemtechnik GmbH

Untere Talstraße 65

Tel.: +49 (0) 70 33/30 18-0

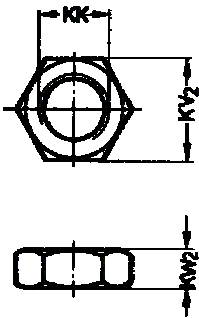
www.herion-systemtechnik.de

D-71263 Weil der Stadt-Merklingen

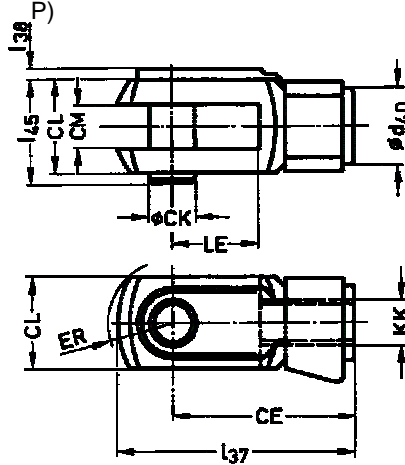
Fax: +49 (0) 70 33/30 18-10

info@herion-systemtechnik.de

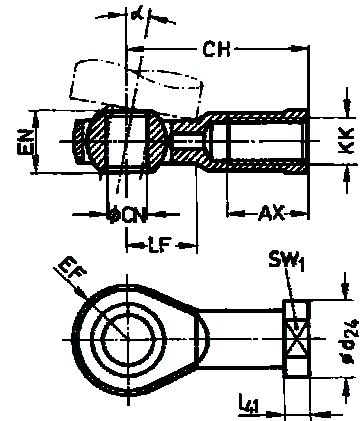
**01**  
Nut  
(DIN 439)



**02**  
Forked head assembly set IG-B<sup>1)</sup> (connection dimensions per ISO 8140 and CETOP RP 102 P)



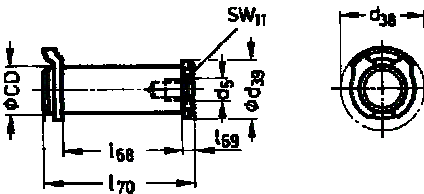
**03**  
Spherical swivel-head assembly set IK (connection dimensions per ISO 8139 and CETOP RP 103 P)



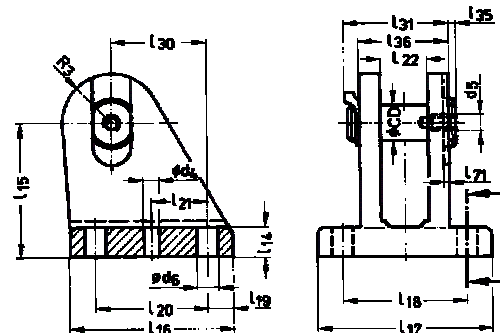
Toleranc				$\frac{H8}{e8}$		B 12	7 H		h 12	High	6 H												High
Piston Ø	AX	CE	CH	ØCK	ØCL	CM	ØCN	EF	EN	ER	KK	KV <sub>2</sub>	KW <sub>2</sub>	LE	LF	SW <sub>1</sub>	Ød <sub>24</sub>	Ød <sub>40</sub>	l <sub>37</sub>	l <sub>38</sub>	l <sub>41</sub>	l <sub>45</sub>	< [°]
25	16	32	36	8	16	8	8	12	12	13	M8	13	4	16	13	14	16	14	42	2.5	5	19	9
32	20	40	43	10	20	10	10	14	14	16	M10x1.25	17	5	20	15	17	19	18	52	3	6.5	23	9
40	22	48	50	12	24	12	12	16	16	19	M12x1.25	19	6	24	17	19	22	20	62	3	6.5	28	9
50, 63	28	64	64	16	32	16	16	21	21	25	M16x1.5	24	8	32	22	22	27	26	83	3	8	36	10
80	33	80	77	20	40	20	20	25	25	32	M20x1.5	30	10	40	26	30	34	34	105	4	10	46	10
100	42	100	94	25	50	25	25	30	31	41	M24x2	36	12	50	30	36	42	42	132	5	12	57	10

<sup>1)</sup> With ES bolts (as labelled) for pistons up to Ø 63. Bolts with head and lock used for pistons Ø 80 and greater

**04**  
Bolts, assembly set BSS  
(with collar<sup>2)</sup> and clamp lock)  
- fits cylinder with spherical swivel bearing



**05**  
Bearing block with rigid axle, assembly set SSB-B  
(with bolts, assembly set BSS)  
- fits cylinder with spherical swivel bearing



Toleranc	$\frac{H9}{e8}$					H 13				JS 15		JS 14		JS 14		B 12	JS 14							+ 0.2 <sup>2)</sup>	
Piston Ø	ØCD	R <sub>3</sub>	SW <sub>11</sub>	Ød <sub>4</sub>	d <sub>5</sub>	Ød <sub>6</sub>	Ød <sub>38</sub>	Ød <sub>39</sub>	l <sub>14</sub>	l <sub>15</sub>	l <sub>16</sub>	l <sub>17</sub>	l <sub>18</sub>	l <sub>19</sub>	l <sub>20</sub>	l <sub>21</sub>	l <sub>22</sub>	l <sub>30</sub>	l <sub>31</sub>	l <sub>35</sub>	l <sub>36</sub>	l <sub>68</sub>	l <sub>69</sub>	l <sub>70</sub>	l <sub>71</sub>
25, 32	10	10	-	5.8	M4	6.6	19	-	10	30	38	55	39	8	22	11	14	22	30.5	5.5	25	25	4.5	34	-
40	12	15	12.8	5.8	M6	6.6	21	17	10	35	45	55	39	8	29	14.5	16	22	34.5	1.5	28	27	2.5	34.5	1
50	12	17	12.8	5.8	M6	6.6	21	17	10	45	55	59	42	8.5	38	19	16	32.5	36.5	1.5	30	29	2.5	36.5	1
63	16	18	16.8	7.8	M6	9	27.6	20	12	55	65	75	57	9	47	23.5	21	40	48.5	1.5	41	39.5	3	48.5	1.5
80	16	18	16.8	7.8	M6	9	27.6	20	17	60	65	75	57	9	47	23.5	21	40	48.5	1.5	41	39.5	3	48.5	1.5
100	20	22	20.8	9.8	M8	11	40	25	14	80	80	90	64	13	54	27	25	51	52.5	2	45	43.5	3.5	53	1.5

<sup>2)</sup> For pistons Ø 25 and 32 with 2 clamp locks (no collar).