

Accessories for LHZ and LHZ K type hydraulic cylinder



**Systemtechnik
GmbH**

Piston Ø25 - Ø200 mm

fits cylinder PN [pmax.] = 160 and 250 bar

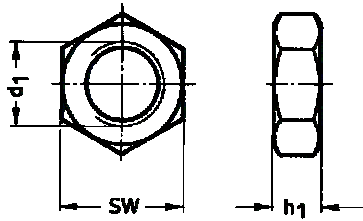
7501131.05.08.05

Specifications

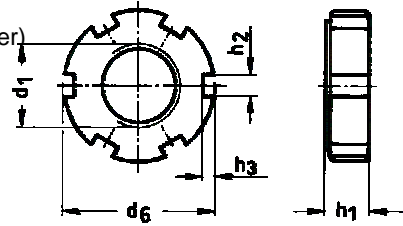
Piston Ø [mm]		Accessory name	Material	Dimension drawing	Mass [kg]	Order no.:		
160 bar	250 bar							
25	-	Nut for piston rod	Galvanised steel	01	0.010	11 062 67		
32	25				0.018	07 006 29		
40	32				0.021	11 062 68		
50	40				0.040	11 062 69		
63	50				0.101	11 062 70		
80	63				0.150	11 508 29		
100	80				0.295	11 005 14		
125	100				0.445	11 005 15		
160	125				Nut for piston rod DIN 1804	02	0.416	11 508 30
200	160						0.576	11 508 31
-	200	1.040	11 508 32					
25	-	Spherical swivel-head model per CETOP (other models on request)	Steel	03	0.11	43 291 10		
32	25				0.21	43 291 00		
40	32				0.40	43 291 01		
50	40				0.66	43 291 02		
63	50				1.10	43 291 03		
80	63				2.05	43 291 04		
100	80				4.45	43 291 05		
125	100				7.60	43 291 06		
160	125				14.5	43 291 07		
200	160				28.0	43 291 08		
-	200				43.0	43 291 09		
25	25	Bearing block with bolts and lock	Steel	04	0.64	43 291 50		
32	32				1.05	43 291 51		
40	40				2.02	43 291 52		
50	-				2.98	43 291 53		
63	50				4.00	43 291 54		
80	63				7.25	43 291 55		
100	80				12.0	43 291 56		
125	100				19.5	43 291 57		
160	125				39.0	43 291 58		
200	160				77.5	43 291 59		
-	200				131.1	43 291 60		

Dimension drawings/chart [dimensions in mm]

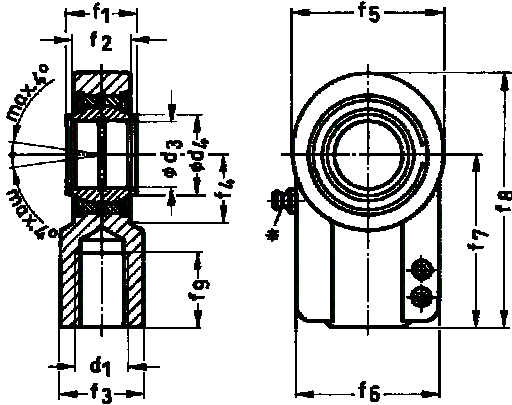
01 Nut
(up to M48x2)



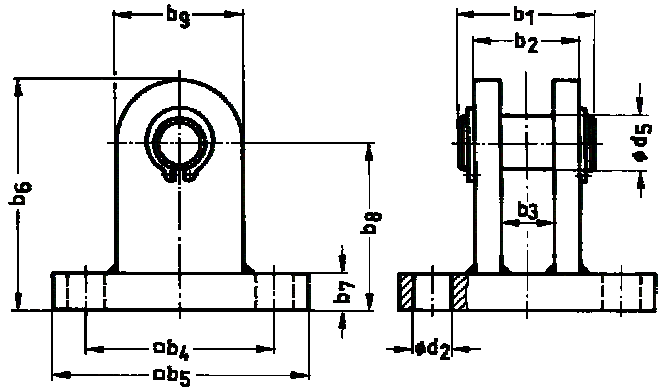
02 Nut
(M64x3 or larger)



03 Spherical swivel-head



04 Bearing block



* Ball head DIN 71412

Tolerance		B11									6H				H7		H8/f8
Piston Ø		b ₁	b ₂	b ₃	□b ₄	□b ₅	b ₆	b ₇	b ₈	b ₉	d ₁	Ød ₂	Ød ₃	Ød ₄	Ød ₅		
25	-	32	24	12	60	80	59	10	43	32	M 12x1.25	11	12	15.5	12		
-	25	32	24	12	60	80	59	10	43	32	M 12x1.25	11	16	20	12		
32	-	40	32	16	70	90	74	12	54	40	M 12x1.25	14	16	20	16		
-	32	40	32	16	70	90	74	12	54	40	M 16x1.5	14	20	25	16		
40	-	50	40	20	80	110	90	16	65	50	M 16x1.5	18	20	25	20		
-	40	50	40	20	80	110	90	16	65	50	M 20x1.5	18	25	30.5	20		
50	-	60.5	49	25	90	125	108	16	78	60	M 20x1.5	18	25	30.5	25		
63	50	68.5	56	32	100	140	128	16	93	70	M 27x2	18	32	37	32		
80	63	86	70	40	125	160	163	20	118	90	M 33x2	22	40	46	40		
100	80	108	90	50	150	190	190	20	135	110	M 42x2	26	50	57	50		
125	100	131	113	63	170	210	217	25	152	130	M 48x2	26	63	71.5	63		
160	125	163	140	80	220	270	277	30	192	170	M 64x3	33	80	91	80		
200	160	203	180	100	270	330	340	40	235	210	M 80x3	39	100	113	100		
-	200	250	225	125	320	380	419	40	289	260	M 100x3	39	125	138	125		

Tolerance		±0,3													
Piston Ø		Ød ₆	f	f	f	f ₄	f ₅	f ₆	f	f	f	h ₁	h ₂	h ₃	SW
25	-	-	12	10.5	16	14	32	32	38	54	17	6	-	-	19
32	25	-	16	13	21	18	40	40	44	64	19	8	-	-	22
40	32	-	20	17	25	22	47	47	52	77	23	8	-	-	24
50	40	-	25	21	30	27	58	54	65	96	29	10	-	-	30
63	50	-	32	27	38	32	70	66	80	118	37	13.5	-	-	41
80	63	-	40	32	47	41	89	80	97	145.5	46	14	-	-	50
100	80	-	50	40	58	50	108	96	120	179	57	16	-	-	65
125	100	-	63	52	70	62	132	114	140	211	64	18	-	-	75
160	125	95	80	66	90	78	168	148	180	270	86	14	10	4	-
200	160	115	100	84	110	98	210	178	210	322	96	16	10	4	-
-	200	145	125	102	135	120	262	200	260	405	113	16	12	5	-